



world
class
winches

Hydraulic Planetary Gear Winches

H60PE

Manual freespool clutch
Pneumatic freespool clutch

Type No 73.07-060
Type No 73.07-061

6 TONNES WINCH WITH EXTENDED ROPE DRUM



Pulling force

- bottom rope layer	6.0 tonnes	13 500 Lbs
- top rope layer	4.3 tonnes	9 700 Lbs

Rope speed

- bottom rope layer	10.0 m/min	33 ft/min
- top rope layer	14.0 m/min	46 ft/min

Rope speed in high auto 2-speed

- bottom rope layer	n/a	n/a
- top rope layer	n/a	n/a

Max oil pressure

195 bar 2800 psi

Max oil flow

60 l/min 16 gal/min

Drum diameter

126 mm 4.96 inch

Rope diameter

14 mm 0.55 inch

(Acc. to DIN 14584, MBL \geq 118 kN)

Rope length

30 m 98 ft

Numbers of layers

3 3

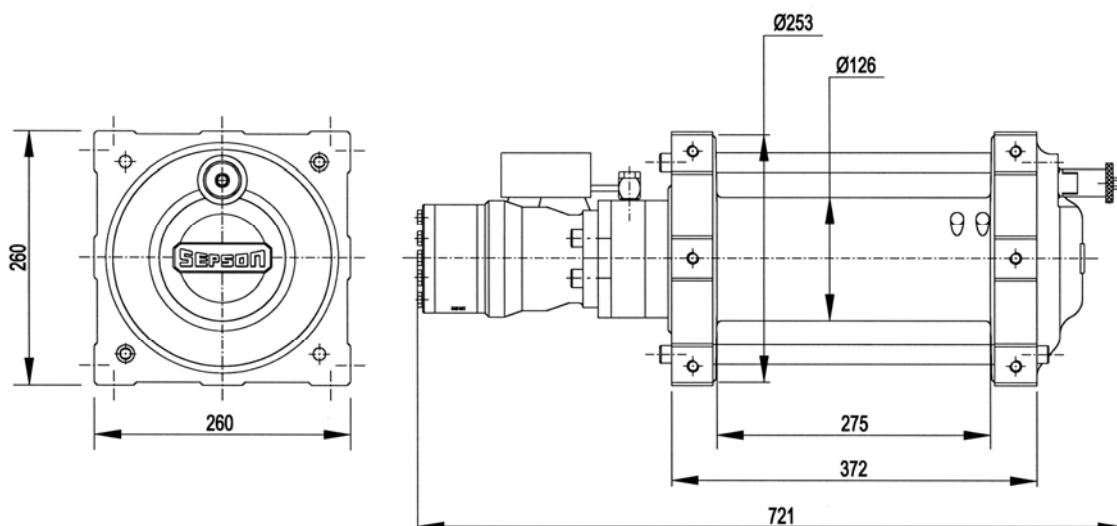
Winch weight

78 kg 175 Lbs

Rope weight

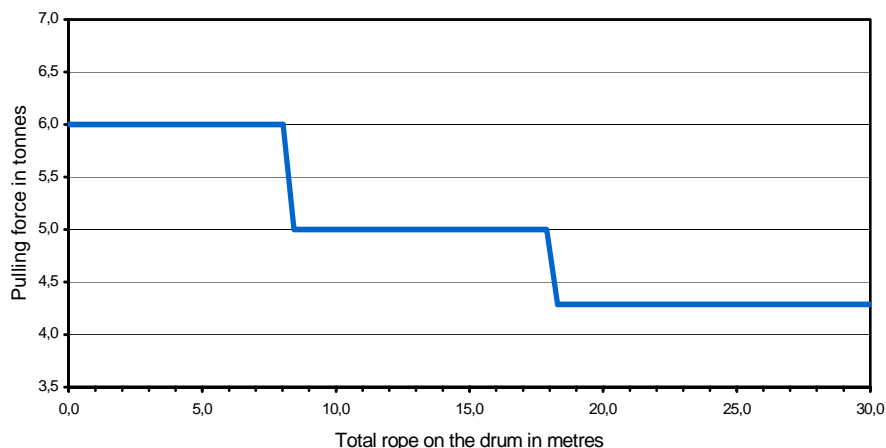
25 kg 56 Lbs

Dimensional drawing (dimensions in mm)



Pulling force over the rope length

	Pulling force (tonnes)	Rope speed (m/min)	Total Rope on the drum (m)
1st	6,0	10,0	8,2
2nd	5,0	12,0	18,1
3rd	4,3	14,0	29,6

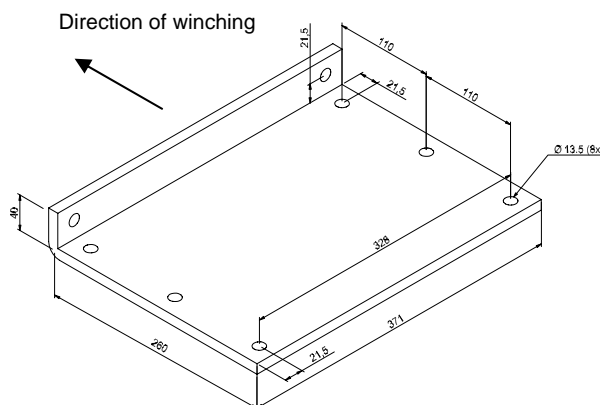


Mounting instructions

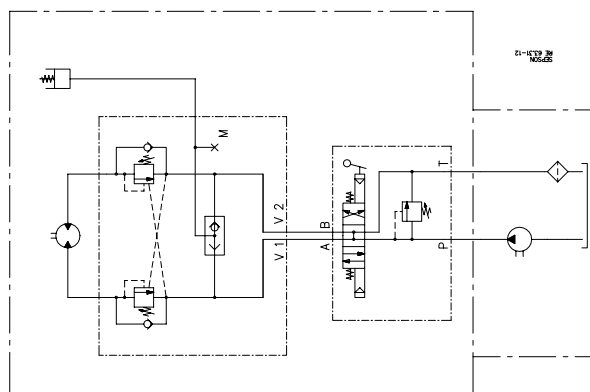
The winch should be mounted on a 12 mm steel mounting plate fixed to the vehicle.

The winch must be fitted to the mounting plate with 8 bolts M6S M12x35 (hot galvanized) minimum quality 8.8.

Tightening torque 124 Nm (12.4 kpm) when oiled.



Hydraulic installation



Declaration of Conformity

According to the Machine Directive 98/37/EC, Annex IIA

Sepson AB, P.O. Box 172, SE-780 50 Vansbro, Sweden declare under our sole responsibility that:

The winch type 73.07 with serial numbers 846-1786

- are manufactured according to the Machine Directive 98/37/EC
- are manufactured according to following harmonized standards – EN 292-1 and 2

Vansbro December 9, 2005. **Sepson AB** Ulf Jons Designer