



world  
class  
winches

# Hydraulic Planetary Gear Winches

## H100PF

Pneumatic freespool clutch Type No 63.31-050

### 10 TONNES WINCH



#### Pulling force

- bottom rope layer	10.0 tonnes	22 500 Lbs
- top rope layer	6.5 tonnes	14 600 Lbs

#### Rope speed

- bottom rope layer	6.0 m/min	20 ft/min
- top rope layer	9.0 m/min	30 ft/min

#### Rope speed in high auto 2-speed

- bottom rope layer	n/a	n/a
- top rope layer	n/a	n/a

#### Max oil pressure

160 bar 2300 psi

#### Max oil flow

60 l/min 16 gal/min

#### Drum diameter

224 mm 8.82 inch

#### Rope diameter

16 mm 0.63 inch

(Acc. to DIN 14584, MBL  $\geq$  197 kN)

#### Rope length

60 m 197 ft

#### Numbers of layers

5 5

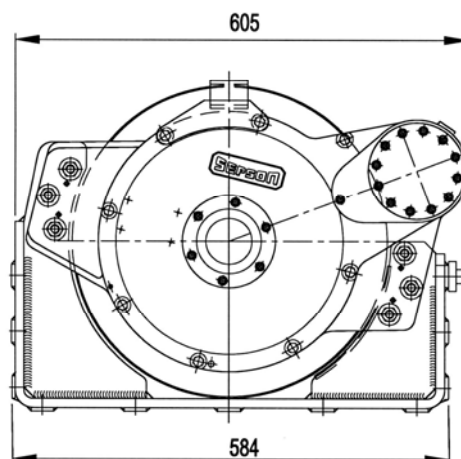
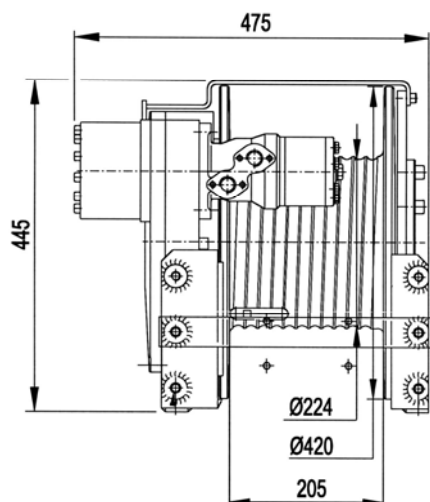
#### Winch weight

190 kg 427 Lbs

#### Rope weight

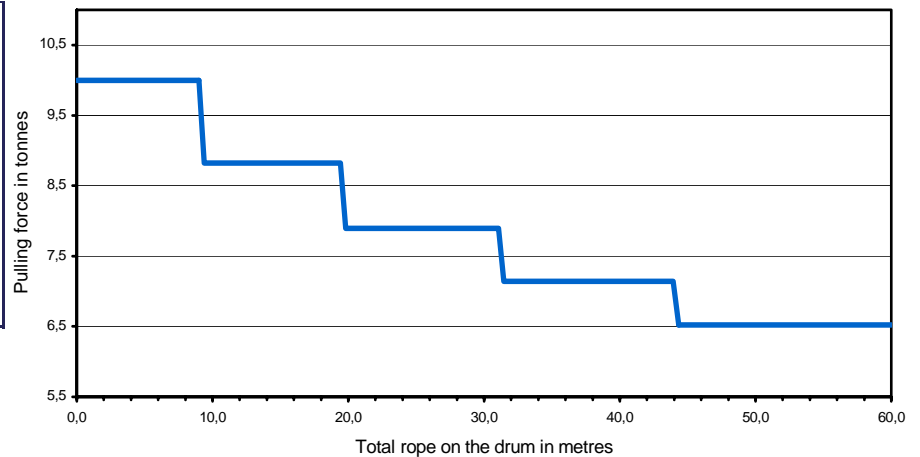
67 kg 151 Lbs

### Dimensional drawing (dimensions in mm)



### Pulling force over the rope length

	Pulling force (tonnes)	Rope speed (m/min)	Total Rope on the drum (m)
1st	10,0	6,0	9,2
2nd	8,8	7,0	19,6
3rd	7,9	7,5	31,3
4th	7,1	8,5	44,1
5th	6,5	9,0	58,2

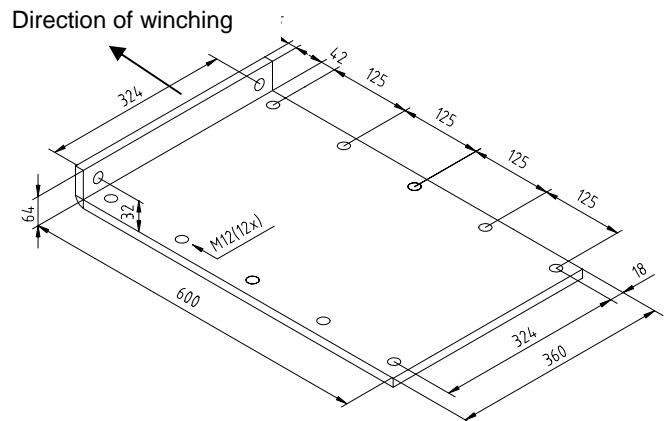


### Mounting instructions

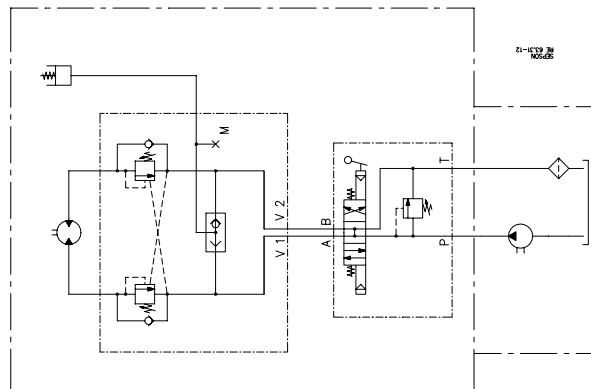
The winch should be mounted on a 16 mm steel mounting plate fixed to the vehicle.

The winch must be fitted to the mounting plate with 12 bolts M6S M12x40 (hot galvanized) minimum quality 12.9.

Tightening torque 150 Nm (15 kpm) when oiled.



### Hydraulic installation



#### Declaration of Conformity

According to the Machine Directive 98/37/EC, Annex IIA

**Sepson AB, P.O. Box 172, SE-780 50 Vansbro, Sweden** declare under our sole responsibility that:

The winch type 63.31 with serial numbers 1010-1962

- are manufactured according to the Machine Directive 98/37/EC
- are manufactured according to following harmonized standards – EN 292-1 and 2

Vansbro December 9, 2005. **Sepson AB** Ulf Jons Designer